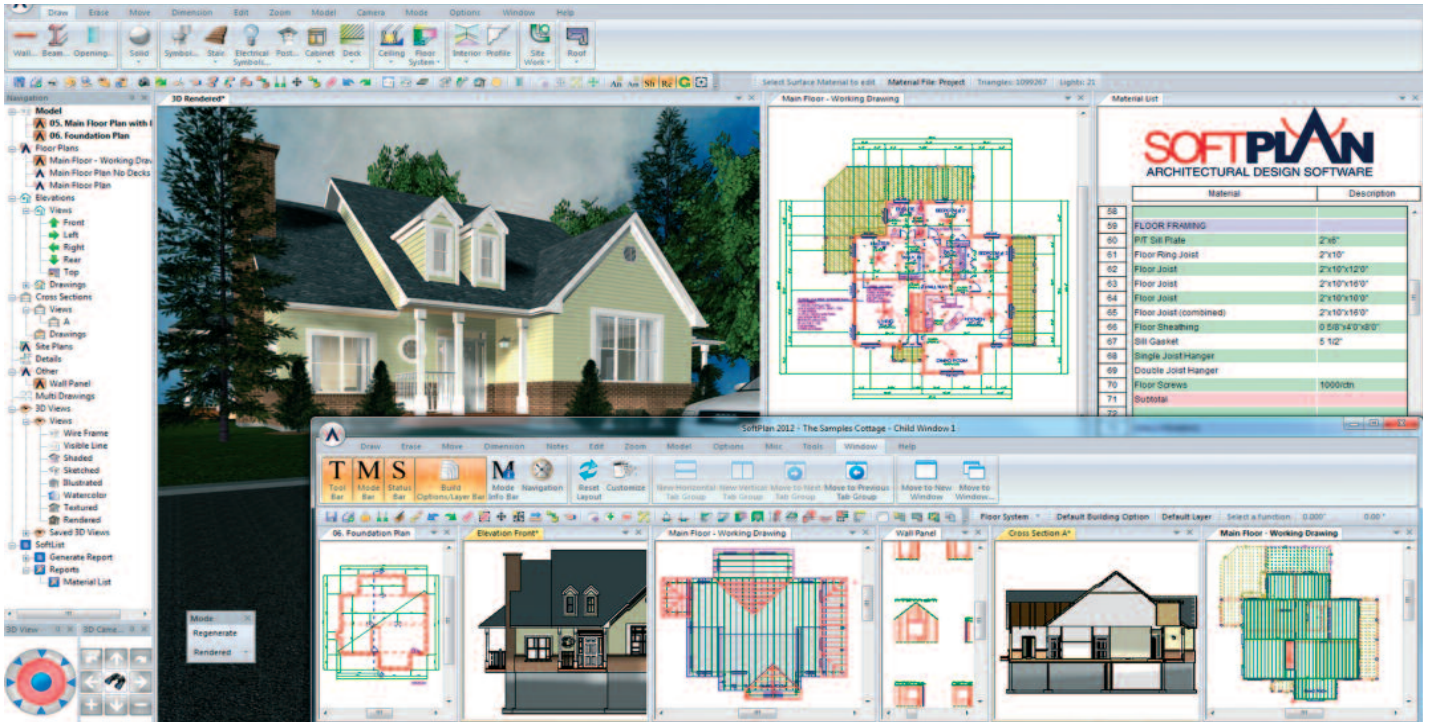


Free technical help for current versions...Free Forum...Free ReView Reader...Free SoftPlan Studio for consumers



*Softplan, the world's most advanced residential design software, introduces SoftPlan 2012, the ideal residential and light commercial building design solution. SoftPlan 2012 has all the tools of previous platforms and adds powerful new features and an attractive, interactive 3D display.*

SoftPlan's interface includes the new Navigation Menu. This multi-file management tool streamlines and supplements previous tools used to organise drawings. The Navigation Menu uses drag and drop drawing management in order to perform tasks such as assembling floors. Cross sections, Elevations, 3D views, materials lists and more can all be accessed using this menu. Consequently, fewer steps are necessary in order to perform essential tasks. Users can configure SoftPlan to their exact requirements and those of their clients, both in Metric and Imperial measurement.

SoftPlan 2012 allows multiple drawings to be opened simultaneously either in separate windows or tabs. Child windows are particularly useful when using multiple monitors. The floorplan can be opened on one screen while a 3D model is opened on another. Changes made to the floorplan will automatically update the 3D model and changes made to the model will be applied instantaneously to the floorplan.

Almost all items that can be added to the 2D floorplan can now be drawn within the 3D model. Over 1,500 all new, high quality 3D symbols are available, including up to date manufacturer's symbols. Various dimension, edit, adjust and move commands are all available within the 3D model making the design process even more free flowing.

SoftPlan 2012 includes a new multi-threaded ray tracing rendering engine. This new engine affords realistic graphics using features such as photon mapping, improved shadows, ambient occlusion, better reflections and emissive surfaces. All these improvements and still this new release yields faster rendering, smoother, single-click navigation tools and real time fly-bys of a model. This cements SoftPlan 2012 as the superior design presentation tool.

Hundreds of other features have also been added to SoftPlan: Within the roof framing section, purlin, energy heel truss, and collar tie commands have been added. Even more automation is provided through the use of "auto railings", a feature that adds railings with a single click of the computer's mouse. Cabinets can be customised with more accuracy and cabinet frame style can be selected from an exhaustive list of styles. Polyline section lines have been added allowing for the inclusion and exclusion of certain features in the resulting cross sections. The addition of Neighbourhood houses gives the ability to quickly create stunning streetscapes. These are just a few of the timesaving and essential features which team up with SoftPlan's veteran tools to provide the most advanced and comprehensive tool set in the industry.

**For information please visit our website – [WWW.interbild.com](http://WWW.interbild.com)  
Telephone Tom Docherty 01382 532837**

